

HOW DID YOUR CITY IMPLEMENT IT?

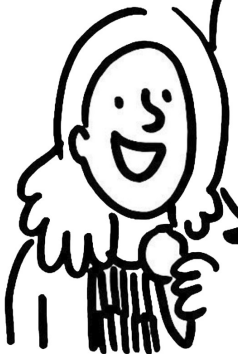
BY EMPOWERMENT OF THE COMMUNITY



USING THE MARKET TO THINK ABOUT GREEN CHOICES



WE FIRST REACHED SOCIAL IMPACT BY VEGETABLE GARDENS



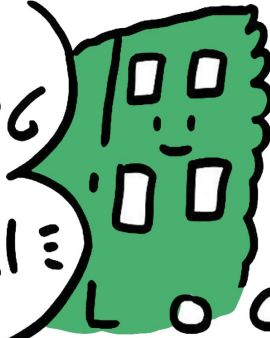
IT'S AN OPEN SPACE WHERE EVERYONE CAN COME IN



WE TURNED AN UGLY BUILDING...



... INTO SOMETHING INTERESTING WITH A GREEN WALL

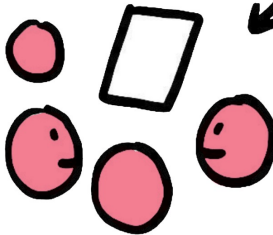


WHICH STARTED CONVERSATIONS!

WE TRIED TO CONNECT BY PLANNING BOTTOM-UP INSTEAD OF TOP-DOWN



LOOKING AHEAD AND AT NEXT PROJECTS



THIS WILL PROMOTE COMMITMENT

