

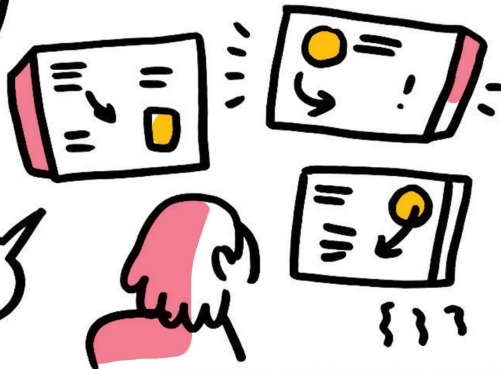
IN KRAKOW
WE DEVELOPED
GOVERNANCE
INSTRUMENTS

RAIN
GARDENS

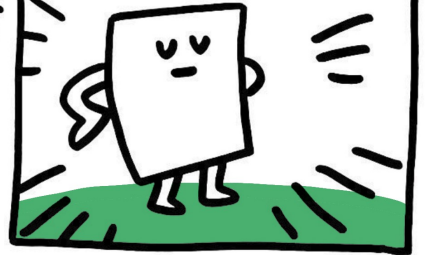


SUCH AS

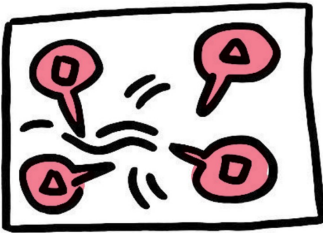
to EXPOSE
THE VULNERABILITY
ON OUR MAPS



AS EVIDENCE
MORE NBS
IS NEEDED

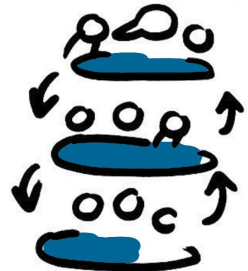


to IMPLEMENT
THIS WE USED
SPATIAL MODELS



IN QUITO
WE TRIED A
HOLISTIC APPROACH
IN MAINSTREAMING
NBS policy

IN CO-CREATION
BETWEEN LEVELS
WE INTEGRATED
NBS INTO POLICIES
IN A SHORT TIME



WE HAD
lots of FLOODS
AND INCREASE
OF EROSION



IT WAS HARD
WORK BUT WE
PULLED IT OFF



STUDIO
ROOD
GRAS